

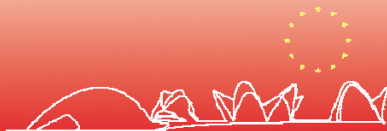


em 2010.es

Energy Efficient Buildings Public Private Partnership Parallel Session

Conclusions

Ignacio Calvo
President of E2B Association



The European RTD Framework Programmes:
From Economic Recovery to Sustainability

12 13 14 15 16

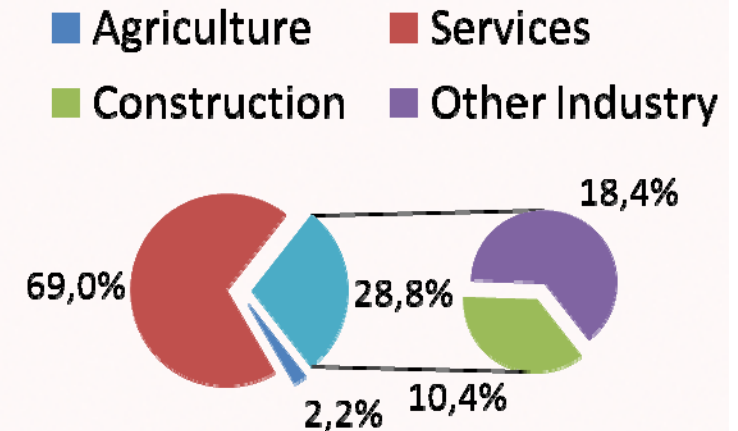
FP7: European Innovation
and RTD Transforming
Sectors Week

The Construction Sector in EU27

- The **biggest industrial employer**

- **10.4% of GDP** and 49.2% of Gross Fixed Capital Formation (FIEC, 2008)
- **30% of industrial employment**, 7.6% of total employment (16.3 million operatives)
- 3 millions enterprises (**95% SMEs** with <20 workers, local markets, low innovative)

Share of GDP



- A **large influence** on the whole economy

- **48,9 millions workers** depending on Construction
- The **buildings/infrastructure** supplied by the Construction sector **serve a lot of other industries and services**



Energy Efficient Buildings



- **A major world-wide challenge**
 - Buildings = **major potential** for energy/carbon **savings**
 - today more than 40 % of energy consumption
 - and around 30 % of GHG emissions
- **Energy Efficient Buildings PPP – A reality**
 - Industrial Association created open to all stakeholders → **E2BA**
 - Ad-Hoc Industrial Advisory Group launched → **Multiannual Roadmap**
 - 1st EeB call launched: strong involvement of industry and **SMEs**
 - Recommendations for future PPP instrument → **Sherpa group**
- **Ambition**
 - Retrofit the existing building stock (200 million houses and many offices)
 - Develop future positive energy buildings/districts
 - Develop, integrate and demonstrate new products & technologies

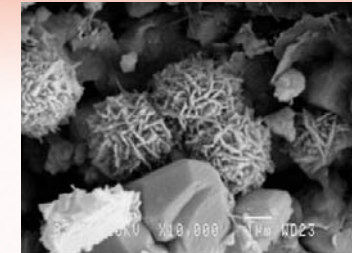
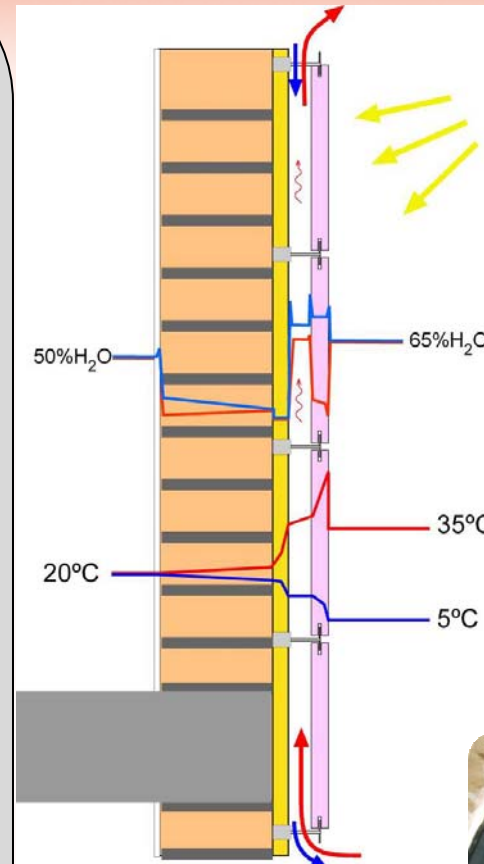




RESEARCH CHALLENGES



- Envelope and components
- Systems and Equipment for energy use
- Storage of energy
- Quality indoor environment
- Design-Integration of new solutions
- Envelope and components
- Industrialisation and mass customization
- ICTs, Automation and Control
- Life cycle analysis
- Energy Management
- Labelling and standardization
- Diagnosis and predictive maintenance
- Systems Equipment for Energy production





Conclusions



The PPPs should lead to:

- Long term commitment between the private and public sectors to address European industrial, social and environmental major challenges.
- Medium to Long term strategy, streamlined and simplified procedures that will boost the industrial and SME participation in research.
- A trustful cooperation between the industry, the EC and the Member States to achieve an effective implementation of the PPPs.
- A long term research roadmap lead by the industry with clear measurable targets and expected impacts.
- Transparent, open and independent processes and procedures lead by the public entities.
- The projects under the PPP should have industrial leadership and look for big impacts in terms of competitiveness, societal and market impact.

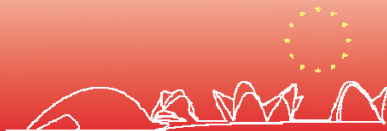
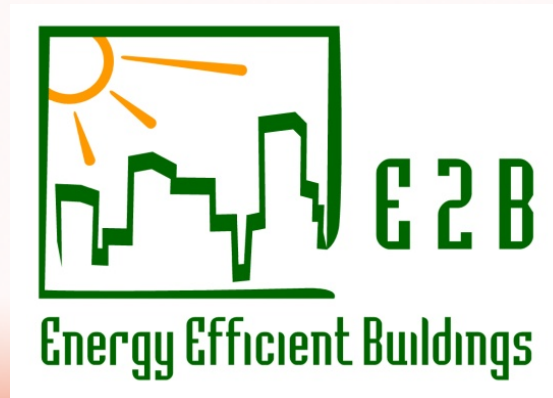




em 2010.es



Thank You for your attention



The European RTD Framework Programmes:
From Economic Recovery to Sustainability

12 13 14 15 16
FP7: European Innovation
and RTD Transforming
Sectors Week